

# Digestive System



CPT® copyright 2011 American Medical Association. All rights reserved.

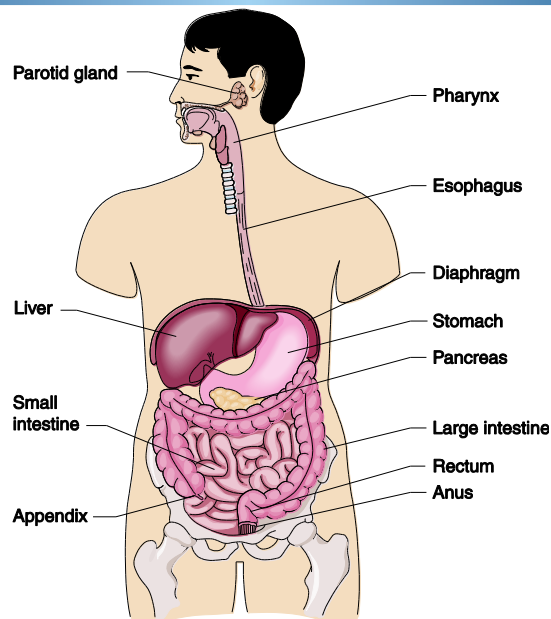
Fee schedules, relative value units, conversion factors and/or related components are not assigned by the AMA, are not part of CPT®, and the AMA is not recommending their use. The AMA does not directly or indirectly practice medicine or dispense medical services. The AMA assumes no liability for data contained or not contained herein.

CPT® is a registered trademark of the American Medical Association.



# Objectives

- Define and understand the key terms associated with the digestive tract and the procedures performed in this section
- Understand the anatomy associated with the procedures performed in this section
- Explain the organization and content of the CPT® Surgery/Digestive System subsections
- Learn to assign appropriately CPT® surgery codes from the digestive subsection



## Digestive System Terms

- Gastroenterology
- Digestion
- Absorption
- Mastication



## Digestive System

- Lips
  - Entrance to the oral cavity
- Teeth
  - Begin mechanical digestion via chewing
  - 20 Deciduous teeth
  - 32 Permanent teeth
- Gums
- Tongue
  - Muscle
  - Facilitates chewing and swallowing



# Digestive System

- Pharynx
  - Conduit for respiration and digestion
  - Composed of:
    - Nasopharynx
    - Oropharynx
    - Laryngopharynx
- Esophagus
  - Conduct food from the pharynx to the stomach
  - Peristaltic action moves the food



# Digestive System

## Stomach:

- Cardia
- Fundus
- Pylorus (antrum)
- Body



# Digestive System

- Small Intestine (small bowel)
  - Duodenum
  - Jejunum
  - Ileum
- Large Intestine (large bowel)
  - Cecum (appendix attached)
  - Colon
    - Ascending colon
    - Transverse colon
    - Descending colon
    - Sigmoid colon
    - Rectum
    - Anus



# Digestive System

- Spleen
  - Blood-forming early in life
  - Acts as a storage organ and filter for blood later in life
- Pancreas
  - Endocrine and exocrine organ
  - Secretes insulin into the bloodstream



# Digestive System

- Liver (Hepatic)
  - Largest organ and largest gland
  - Vital functions include:
    - Storage of glucose as glycogen, fat-soluble vitamins, and vitamin B12
    - Making of plasma proteins
    - Excretion of bilirubin, cholesterol and drugs
    - Metabolism of carbohydrates, protein and fats
    - Making of bile salts
    - Detoxification of drugs and other harmful substances
- Gallbladder



# ICD-9-CM

- Chapter 1 – Infectious and Parasitic Diseases
- Chapter 2 – Neoplasms
- Chapter 9 – Disease of the Digestive System
- Chapter 14 – Congenital Anomalies
- Chapter 16 – Signs, Symptoms, and Ill-Defined Conditions



## Disease of the Digestive System

- Dental Specialists:
  - General dentist
  - Periodontist
  - Endodontist
  - Orthodontist
  - Oral Surgeon



## Diseases of the Digestive System

- GERD
- Appendix
  - Appendicitis (540-543)
  - Peritonitis (540.0)
  - Abscess (540.1)



## Diseases of the Digestive System

- Hernia of the abdominal cavity (550-553)
  - Inguinal
  - Femoral
  - Umbilical
  - Abdominal
  - Diaphragmatic
- Diverticula of intestine (562)
  - Diverticulosis
  - Diverticulitis
- Fissures and fistulas



## Diseases of the Digestive System

- Hepatitis
  - Acute
  - Chronic
  - Classifications
- Cirrhosis
  - Hepatitis
  - Chronic Alcoholism





## Diseases of the Digestive System

- Cholelithiasis
- Cholecystitis
- Neoplasms



## CPT®

- Organized by anatomic site and procedure
- Endoscopy
  - Visualization of a hollow viscus or canal by means of an endoscope or scope
  - Laparoscope is an endoscope



## CPT®

- Lips (40490-40799)
  - Vermilionectomy
  - Cheiloplasty
- Vestibule of Mouth (40800-40899)
  - Vestibuloplasty
  - Repair of lacerations
  - Frenectomy



## CPT®

- Tongue and Floor of Mouth (41000-41599)
  - Incision
    - Intraoral I & D
    - Extraoral I & D
    - Frenotomy
  - Excision
    - Biopsy
    - Excision of Lesion
    - Removal of all or part of tongue
  - Repair



## CPT®

- Dentoalveolar Structures (41800-41899)
  - Gums (or soft tissue structures)
  - Bone that anchor the teeth
- Palate and Uvula (41870-41899)
  - Roof of the mouth
  - Uvula – posterior edge of the middle of the soft palate
- Salivary gland and ducts (42300-42699)
  - Codes based on gland



## CPT®

- Pharynx, Adenoids and Tonsils (42700-42999)
  - Tonsillectomy
  - Adenoidectomy
  - Biopsy
  - Pharyngoplasty
  - Pharyngostomy



## CPT®

- Esophagus (43020-43499)
  - Incision
    - Esophagotomy – based on approach
    - Cricopharyngeal myotomy
  - Excision
    - Lesion excision – based on approach
  - Endoscopy
    - Include moderate sedation
    - Watch indented codes...brackets may be useful here
    - ERCP – Endoscopic Retrograde Cholangiopancreatography



## CPT®

- Esophagus (43020-43499) *cont.*
  - Repair
    - Codes selected based on approach
  - Manipulation
    - Dilation of esophagus
    - Report S & I in addition



## CPT®

- Stomach (43500-43999)
  - Incision
    - Foreign body removal
    - Excision of stomach tumor
  - Excision
    - Gastrectomy
      - Total or partial
      - Additional procedures performed
  - Introduction
    - Placement, changing and repositioning of feeding tubes
  - Bariatric Surgery
  - Other Procedures



## CPT®

- Intestines (except rectum (44005-44779))
  - Incision
    - Biopsy
    - Exploration
  - Excision
    - Enterectomy
  - Laparoscopy



## CPT®

- Enterostomy (44300-44346)
  - Temporary or permanent
  - Classified according to the part of the intestine used to create the stoma
- Endoscopy (44360 – 44397)
  - Include moderate sedation
  - Distinguish if performed through stoma
- Repair (44602-44680)



## CPT®

- Meckel's Diverticulum and the Mesentery (44800-44899)
- Appendix (44900-44960)



## CPT®

- Rectum (45000-45999)
  - Incision – drainage of abscesses
  - Excision
    - Proctectomy – partial or complete
  - Endoscopy
    - Proctosigmoidoscopy
    - Sigmoidoscopy
    - Colonoscopy
- Anus (46020-46942)



## CPT®

- Liver (47000-47399)
- Biliary Tract (47400-47999)
- Pancreas (48000-48556)



## CPT®

- Abdomen, Peritoneum, and Omentum (49000-49999)
  - Exploratory laparotomy (49000)
  - Drainage of abscess – open or percutaneous
  - Laparoscopy
  - Hernia codes
    - Type of hernia
    - Strangulated or incarcerated
    - Initial or subsequent repair



## HCPCS

- Colorectal cancer screening
  - G0104-G0106
  - G0120-G0122





# Modifiers

- 50 – Bilateral
- 52 – Reduced services
- 53 – Discontinued procedure



The End

